



**BUMA TEC CO., LTD.**  
BUMA Technical Compressor



High Efficiency • Cost Saving • Quiet Operation

## **BUMA SCREW AIR COMPRESSOR**

**Belt Drive Type BFB7.5**

# **BUILT ON TRUST**

# BFB7.5

## Specification

### Surrounding

Atmosphere ----- 760 mmHg  
 Working Pressure -----8.0 /kgf/cm<sup>2</sup>  
 Max. Temperature ----- 46 °C

### Compressor

Free Air Delivery ----- 1.1 m<sup>3</sup>/min at 8.0 kgf/cm<sup>2</sup>  
 Cooling Method ----- Air Cooled by Cooling Fan  
 Outlet Air Temperature ----- Ambient Temp. +15°C  
 Operation Control  
 Driven Method ----- Belt Driven

### Electric Motor

Rating Power ----- 7.5kW (10Hp)  
 Power Source ----- AC380V/3-Phase (50Hz)  
 Start Method ----- Y-Δ  
 Pole / RPM ----- 2 pole / 2920 rpm  
 Service Factor ----- 1.15  
 IP Class ----- IP 54  
 Enclosing

### Others

Oil Volume ----- 8 ℓ  
 Noise level ----- 72 dBA  
 Pipe connection ----- 20A  
 Dimension ----- 800mm x 720mm x 830mm  
 Weight ----- 280 Kg

### Controller

Compressor Controller ----- Micro Controller  
 Power Source ----- AC380V, 3 Phase  
 (Built-in Transformer)  
 Pressure Control ----- Continuous Pressure Control  
 by Pressure Sensor  
 Control Method ----- Loading & Unloading Control  
 Operation Mode ----- • Automatic Mode  
 ----- • Continuous Mode  
 ----- • Remote Mode  
 ----- • Schedule Mode  
 (Default: Automatic)

### Error Detecting Function & Auto-Control Function (LCD & LED Display)

- ♦ System Trip and Warning Function
  - Outlet Air Temperature High
  - Main Motor Overload
  - Fan Motor Overload
  - Pressure & Temperature Sensor Fault
- ♦ Auto-Control Function
  - Stop Delay Function
  - Re-start Pressure
  - Automatic Start

### Maintenance Function (LCD & LED Display)

- ♦ Air Filter Change Warning
- ♦ Oil Filter Change Warning
- ♦ Oil Separator Change Warning

### Operation Status Display (LCD & LED Display)

- ♦ Outlet Air Pressure
- ♦ Outlet Air Temperature
- ♦ Operation Mode
- ♦ Load / Unload Status

### Statistics Function

- ♦ Amot Clock (Automatic Time)
- ♦ Total Operating Hour
- ♦ Load / Unload Hour
- ♦ Set Stop Delay Time



# BFB7.5

## Components



### Electric Motor x 1unit

Type	Y2-132S2-2
Rated Power	7.5 kw (10 HP)
Service Motor	1.15
Electric Source	AC380, 3-Phase, 50 Hz
Mode of Operation	S1, Continuous Operation Mode
Pole / RPM	2-Pole / 2920 rpm at 50Hz
Cooling Method	Built-in Fan Cooled
Lubrication	CHERROM
Starting Method	Start-Delta



### Screw Aired x 1unit

Model	3.47.010008
Compression	Oil Flooded 1-Stage Compression
Rotor Combination	5 x 6 (Male * Female)
Pressure Range	5 ~ 13 bar
Operation Speed	3400 rpm

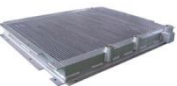


### Suction Air Filter x 1unit

Model	BUMA Genuine Filter
Filtration grade	2 $\mu$ m / Min. 99.8 % (3 ppm)

### Lubrication Oil Circulation

<b>Combined Cooler</b>	1 unit
- Aluminum Wing Type Cooler (for Air / Oil Cooling)	
<b>Oil Filter Housing</b>	1 unit
<b>Oil Filter (BUMA Genuine Filter)</b>	1 unit
<b>Oil Line</b>	1 set
- Seamless Tubing&O-ring Type Parker Fitting	
<b>Cooling Fan</b>	1 unit
- Low Noise Centrifugal Fan	
<b>Fan Motor (AC380V)</b>	1 unit



### Instrument Panel

<b>Controller (BUMA Controller)</b>	1 unit
<b>Pressure Sensor</b>	1 unit
- Pressure Range : 0 ~ 16 kgf/cm <sup>2</sup>	
- Power Source : DC 24V	
- Analog Output : DC 0.1 ~ 10 V	
<b>Temperature Sensor</b>	1 unit
- Outlet Air Temperature	
<b>Pressure Switch</b>	1 unit
- No. 1: Detecting Compressor Sump Pressure	
- No. 2: Stand-by for Failure of Pressure Sensor	
<b>Main EOCR</b>	1 unit
- For Detecting Main Motor Overload	
<b>Fan EOCR</b>	1 unit
- For Detecting Fan Motor Overload	
<b>Display LED (Trip)</b>	1 set
- Main Motor Overload	
- Discharge Air Temperature High	
<b>Display LED (Warning)</b>	1 set
- Filter Change	
- Discharge Temperature High	
<b>Operation Status</b>	1 set
- LED and Lamp Display (Mode, Load/Unload)	
<b>Start Box</b>	1 set
- Including Transformer and Converter	
- Control : DC24V, AC220V	
<b>Emergency Switch</b>	1 unit



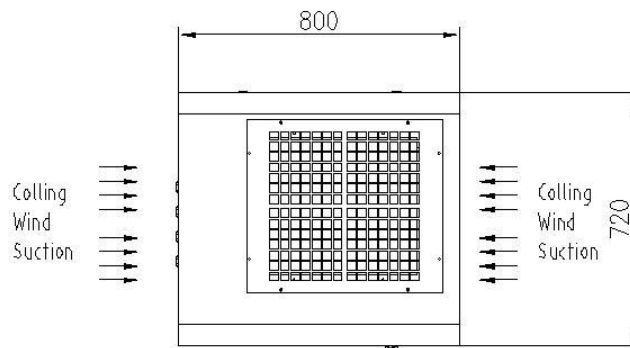
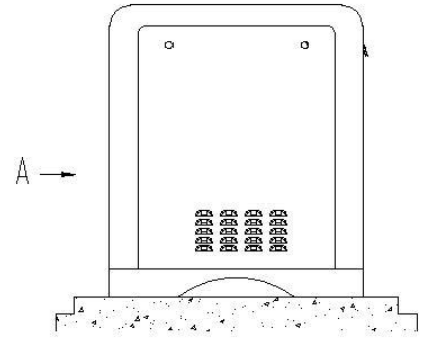
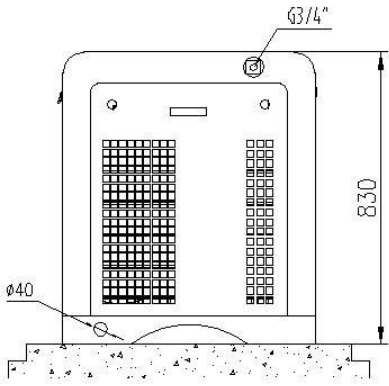
### Pneumatic & Electric Valves

Intake Valve (HX DN25)	1 unit
Minimum Pressure Valve (HX)	1 unit
Solenoid Valve	1 unit
- For Controlling Intake Valve and Purge Valve	
Safety Valve	1 unit
- A28X-16T (DN15)	
Purge Valve (HX)	1 unit

# BFB7.5

## Appearance Drawing

Unit: mm



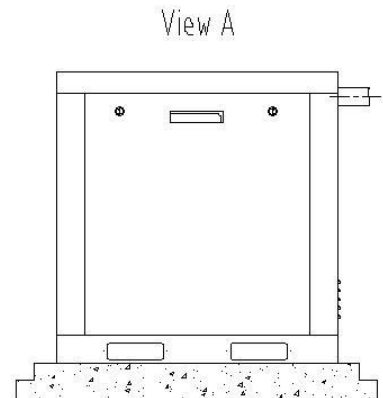
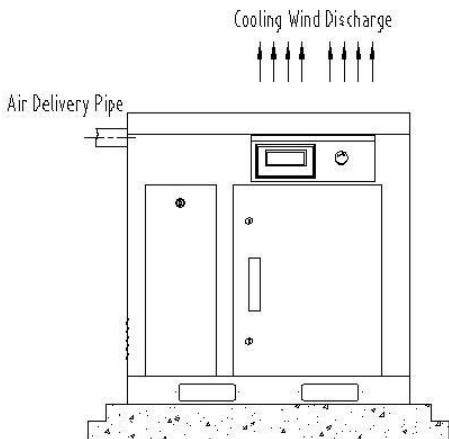
**Dimension**

**Length : 800 mm**

**Width : 720 mm**

**Height : 830 mm**

**Weight : 280Kg**



# BUILT ON TRUST

[www.bumatec.com](http://www.bumatec.com)



WEST OF JIUJING ROAD,  
DANYANG ECONOMIC DEVELOPMENT ZONE,  
JIANGSU, CHINA (Zip Code: 212300)  
TEL: +86-551-6220030  
FAX: +86-511-86220032  
Email: [buma@bumatec.com](mailto:buma@bumatec.com)